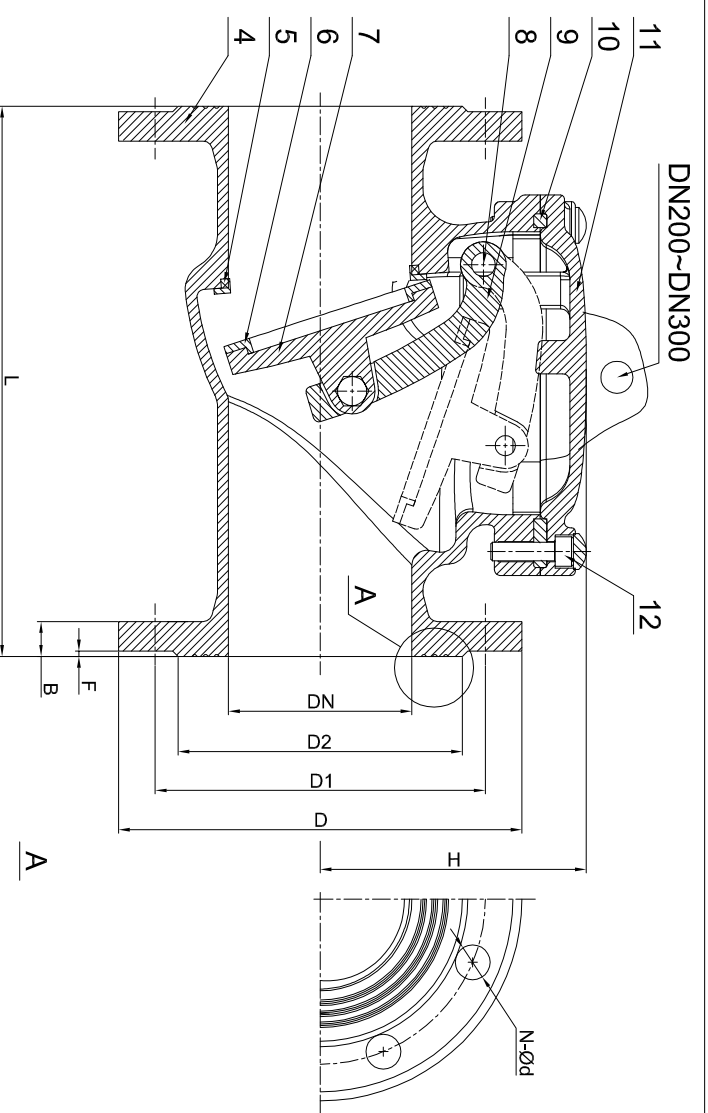
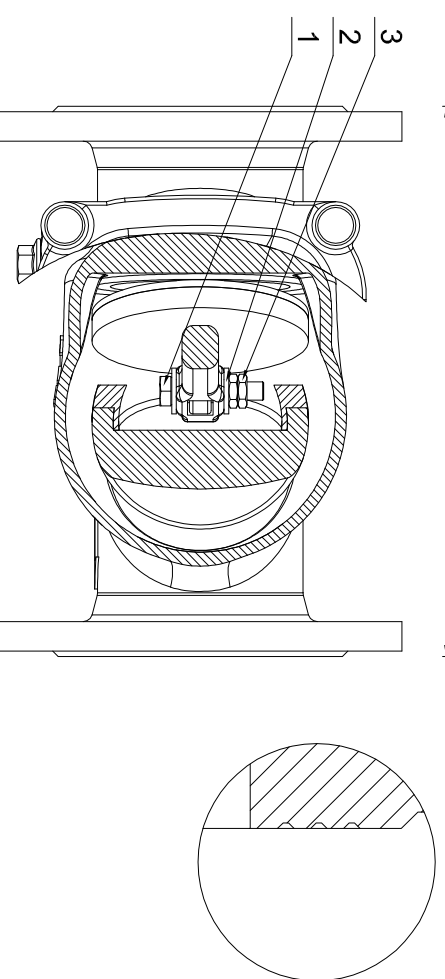


Performance Standard	
Nominal Bore	DN 40~300
Nominal Pressure	PN 16
Pressure Test	
Shell Test	2.40
Seal Test	1.76
Backseat Test	/
Air Test	0.60
Working Temperature	-29°C ~ +80°C
Suitable Medium	Water, etc



- ### Technical Requirements
1. Face to face is according to: DIN3202-F6
 2. Resilient seated in accordance with: EN 16767
 3. Flange dimension conforms as to: BS EN 1092-2
 4. Testing & Inspection as to: EN 12266
 5. Body painting: Epoxy



DN	H	L	D	D1	D2	N-Ød	B	F
40	115	180	Ø150	Ø110	Ø88	4-Ø19	19	3
50	115	200	Ø165	Ø125	Ø102	4-Ø19	19	3
65	118	240	Ø185	Ø145	Ø122	4-Ø19	19	3
80	130	260	Ø200	Ø160	Ø138	8-Ø19	19	3
100	145	300	Ø220	Ø180	Ø158	8-Ø19	19	3
125	160	350	Ø250	Ø210	Ø188	8-Ø19	19	3
150	185	400	Ø285	Ø240	Ø212	8-Ø23	19	3
200	285	500	Ø340	Ø295	Ø268	12-Ø23	20	3
250	325	600	Ø405	Ø355	Ø320	12-Ø27	22	3
300	390	700	Ø460	Ø410	Ø378	12-Ø27	25	4

12	Bolt	ASTM A193 B7 +EZP
11	Cover	Ductile Iron GGG40
10	Rocker Arm	Ductile Iron GGG40
9	Seal Gasket	EPDM
8	Pin	2Cr13
7	Disc	Ductile Iron GGG40
6	Seat Ring	EPDM
5	Valve Seat	Ductile Iron GGG40
4	Body	Ductile Iron GGG40
3	Disc Retainer Nut	SS201
2	Gasket	SS304
1	Disc Retainer Bolt	SS201

No.	Part Name	Material
	DIN 3202-F6	
	Swing Check Valve	

Drawing No.:	
--------------	--



DN40-DN300 PN16 RF
 Body: Ductile Iron GGG40
 Disc: GGG40 + EPDM